



STIFin

INTRODUCTORY 101

Guide to Genetic Personality & Talent Profiling



Madani Institute Pte Ltd:

- ▶ Islamic Education Centre Provider (MUIS Approved)
- ▶ International Centre for Educational Excellence (Singapore Chapter)
- ▶ STIFinSG Test & Consultation Centre (Singapore & Asia Pacific)

VERSE FROM THE AL QURAN

Allah mentioned in Surah Al An'am, verse 135:

قُلْ يَا قَوْمِ اعْمَلُوا عَلَىٰ مَكَانَتِكُمْ

“Say: O my people! act according to your ability (strength or potentials)...”

“Strength is to be treated with gratitude and best knowledge, weakness is to be faced with patience and compassion.”

STIFIn ► THE CONCEPT

STIFIn is a genetic personality testing and from an acronym for **Sensing (S), Thinking (T), Feeling (F), Intuitive (I) and Insting (In)**. It is a genetic intelligent concept that amalgamates research from neuro-science and bio-psychology. It matches a person's natural character, ability or real potentials. The neuro imaging connectivity have allowed digital scanning reader to identify the dominant intelligent character of a person. It's Allah's will that a person's dominant command brain function are genetically inherited. STIFIn is a systematized and solutive not only in concept and knowledge but practical in individual and social life function. Muslim scholar like Imam Al Ghazali too in one of his research scripts in "Al Rasa'il" have concluded 3 intelligence trait of a person; iradah (desire), qudrah (power) and idrak (cognitive).

SOLUTIVE APPLICATION

Our four phase of solution based implementation;

TEST → **TRAIN/EDUCATE** → **CONSULT** → **SOLVE**

Truthful to a person genetic profiling, STIFIn applies in many different field of disciplines; leadership, education, professions, business, talent scouting, parenting, coupling, health & wellness etc. Everyone wish to succeed but successful with nobility is outstanding. STIFIn helps you to shine your stars with nobility as individual and social roles in life to build noble legacy in life and hereafter.



5 MACHINE INTELLIGENCE

THINKING

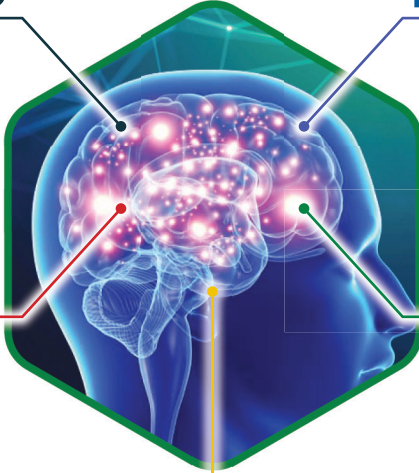
T Left Neocortex
Analytic
Clever

Ti Te

INTUITING

I Right Neocortex
Creativity
Wild Imaginations

Ii Ie



SENSING

S Left Limbic
Memory
Diligent

Si Se

FEELING

F Right Limbic
Emotion
Relationship

Fi Fe

INSTING

In Hindbrain/Midbrain
Instinct
Multiskill

In

FARID PONIMAN
Research & Founder of STIFIn



SENSING

Si

Se

Type: It's intelligence relies on its five senses. The type of intelligence of people SENSING tends to be practical, concrete, and short-term, according to the reach of the five senses. SENSING types are people who fit the rules and are scheduled. When asked to do something, he will do it like most people. He will not be disciplined against the rules that have been set. Chemistry for Sensing type is Wealth.

THINKING

Ti

Te

Type: The intelligence relies on logical thinking. Types of Thinking Intelligence This is what makes THINKING people objective, fair, and effective. The THINKING type is firm, independent, sturdy as iron, he/ she is also given the ability to govern and hold power and is responsible for the mandate given. Chemistry for Thinking type is Throne (Power)"

INTUITING

li

le

Type: Relies on its sixth sense in making decisions that can have far-reaching consequences, makes it a very optimistic, long-term, and conceptual person. His ideas are wild and produce something different. The INTUITING type has an optimistic, creative, classy, strong, and flexible character. Like wood, it has beauty like a ring finger. The ring finger is the part of the finger that is most difficult to move, but it has a beautiful shape and a place to put the ring. Isn't creativity really also hard to move? Creativity is the most valuable science. He likes to be in an environment full of ideas and knowledge based.

The INTUITING type finds its marriage with knowledge, creativity, ideas, solutions represented by WORDS chemistry.



FEELING *Fi* *Fe*

Type: FEELING intelligence always refers to his feelings so that he becomes a person who is considerate, wise, and has the ability to lead. This type of FEELING is full of love, passion and emotions that depend on mood. All comes from feelings, the mainstay is LOVE.

INSTING *In*

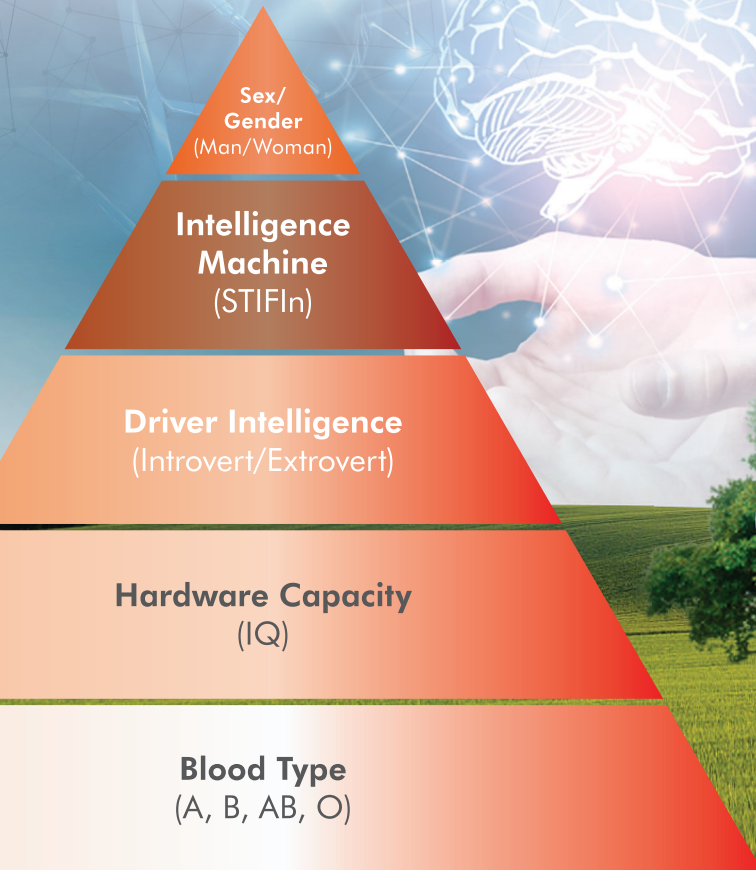
Type: INSTING intelligence always refers to the seventh sense when making a decision. INSTING people are spontaneous, pragmatic, versatile, and willing to sacrifice. INSTING type flowing, calm, looking for happiness and peace by providing benefits to others. Like a middle finger, people INSTING are in the middle to increase their role. He can also be in the middle to reconcile the warring people. Its existence is to cover and complete. He is in the middle because of his versatile abilities. Natural chemistry for Insting type is Happiness. Happiness translate into facilitation, negotiation, networking and peace advocation.



LEADERSHIP

GENETIC STRATA

Genetic strata are levels of genetic factor and state that each genetic element has a degree of influence on intelligence and personality; the highest is gender and the lowest strata is blood group drive stimuli.



WHY YOU NEED TO TAKE THE MACHINE TEST?

- 1** Avoid spent life based on speculations or trial and error in study, job, business or family life. STIFIN is not based pseudo science but uses DNA research and fingerprint biometric testing besides identify blood group driver.
- 2** Every Intelligence and Personality Machine has properties within a person, there are strengths and weaknesses in you. Successful is to achieved in best knowledge and nobility.
- 3** Focus on one natural and dominant abilities (potentials). Act on strength (potentials) based on gratitude and best knowledge.
- 4** Recognize right learning method, leading, communicating, choosing profession, business, wellness or family life partner.



BENEFITS OF STIFIn PERSONALITY TEST

- 1 Know your inherited dominant intelligent.
- 2 Know your character and genetic personality.
- 3 Easier to chart pathway in career, study and passion.
- 4 Know how to manage and nurture your children.
- 5 Know how to learn and be productive effectively.
- 6 Know your probable genetic health matters.
- 7 Know how to communicate effectively.
- 8 Know how to make right decision making and build your legacy effectively.
- 9 Able to partner well with your partners.
- 10 Know your chemistry – asset, positions, words, love or happiness.



STIFIn LEARNING PATHWAY

Activities	Duration	Output
1. Machine Test	10 mins of fingerprint scanning	Report will be produced between 20-30 mins
2. STIFIn Introductory	2 hours Zoom online	Understand overview of STIFIn Personality
3. WSL 1	2 days course – online or offline	Online test after course
4. WSL 2	2.5 days course – online or offline	Evaluation through presentation. Licenced Promoter/ Consultant
5. Thematics	1 theme 1 day course (min 3 theme to pass)	Specialization in different field

WHAT IS TALENT BASED ON GENETICS?

Talent is a gift that God has created within all human being and has existed ever since birth. People who are not aware of their talent are not able to utilize their full potentials. How often you seek for a job, but later end up moving from one job after another? After graduating you thought you want to be a teacher, but sadly later you find out teaching is not your cup of tea and you end up doing some other things.

Same to parent whom may wants their children to do something near to what parent uses to be, but end up the children have different options and doing something else not in the family tradition?

Talent includes knowledge, skills, and attitudes. In life, potentials is needed to be successful. As parent or educators too, you need to detect early hidden talent each of children or students under care. Knowledge, experience, skills, expertise, and capabilities are important Islamic elements in promoting creativity, innovation, networking, communication and how each process learning and making decision effectively.

Thus human talent can be inherited (20% genetic) and may also be environmental nurtured (80%). Based on formula vital of the few, the single dominant intelligence ultimately shine. The intelligence machine (IM) of the brain outer hemisphere combine with the driver – introvert or extrovert or from the inner brain layer hemisphere, both serve as the human operating system (OS). That is human TALENT that result from each type of personalities of the Intelligence Machine.

And God mentioned in surah Al An'am, verse 135: *"...for each to act according to each abilities (strength)"*. Through it you will discover TRUE talent or potentials of each person.

“ It is not about **WHAT**, but **HOW** to make the best **STRATEGY** to pave a way towards success **IN THE PROFESSION** or **SOCIAL ROLES** that you **BELIEVE IN** based on **GENETICS**. ”

TALENT ACCORDING TO DOMINANT BRAIN FUNCTION (STIFIn)

SENSING

Diligent & Stamina

THINKING

Analytical & Task Performer

INTUITING

Creativity & Innovations

FEELING

Relationship & Kingmaker

INSTING

Multitasking & Adaptable

THINKING

T Left Neocortex
Analytic
Clever

Ti Te

INTUITING

I Right Neocortex
Creativity
Wild Imaginations

Ii Ie

SENSING

S Left Limbic
Memory
Diligent

Si Se

FEELING

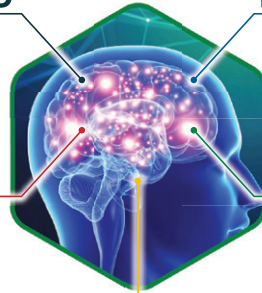
F Right Limbic
Emotion
Relationship

Fi Fe

INSTING

In Hindbrain/Midbrain
Instinct
Multiskill

In



For ages of 2 years old to elderly



CONTACT US

Do consult your licenced promoter/consultant (Singapore)

► For machine testing:

Siti Suhailah bt Madi | 9112 5252 | siti.suhailah@madani-institute.sg

► Mohd Jakfar b Hj Embek | 9783 5825 | mohdjakfar@madani-institute.sg



LIKE & FOLLOW US @ stifinsg

STIFINSG DIRECTORS



Mohd Jakfar Embek



Siti Suhailah Madi

